

2002s
—ONLY—

**ATE T51 Brake Booster
for Side Drafts/EFI Applications**



2002 ti/tii/Turbo/1600GT

M30/2000CS

The ATE T51 Brake Booster is a dual diaphragm, narrow diameter, vacuum assist booster found on several vintage European marques. It was used in applications where space considerations required a smaller diameter booster. Due to its two diaphragms, it also provides more vacuum assisted brake boost than most single diaphragm boosters.

BMW used this booster in the 2002ti, 2002tii, Turbo, 1600GT and 2000CS among others. The body is approximately 6.75" in diameter and 6" long compared to 7.75" by 3.75" for the standard 2002 booster. The brake linkage attachment could be either a fork with a clevis pin or a threaded rod. The 2002 uses the clevis pin connection.

2002sOnly has sourced these T51 brake boosters from around the globe, adapted the linkage attachment where necessary and had them professionally rebuilt for use on the 2002s and M30 models. Each booster comes with all the required nuts and lock washers, a new OEM master cylinder seal ring, and, for the 2002 version only, a spare clevis pin clip with a helpful "wedgie" spreader (). The M30 version also includes a stainless-steel extension rod.

PLEASE NOTE: All ATE T51 boosters use M8x1.25 studs for the two master cylinder studs. However, not all ATE T51 brake boosters use the same studs for the four bracket/firewall mounting studs. You must use the four bracket nuts provided to ensure correct fitment. **USE OF ANY OTHER NUTS WILL VOID THE WARRANTY!**

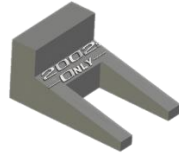
There are many good brake booster installation threads on BMW2002FAQ.com. Here are a few:

<https://www.bmw2002faq.com/forums/topic/144952-tii-brake-booster-installany-pointers-things-to-look-out-for/>

<https://www.bmw2002faq.com/forums/topic/150910-tii-booster-swap-new-brake-lines-or-massage/>

2002s
—ONLY—

The *2002sOnly* Clevis Pin Wedgie Tool



Many thousands of brake boosters have been replaced on the BMW 2002 over the last 50 years by professional mechanics and DIYers alike. It is definitely doable given enough skin, profanity and time. And, one of the most trying aspects of reinstalling the booster is getting the clevis pin clip back on the pin. So, after using up a lot a skin, profanity and time doing this installation ourselves, we came up with a little helper that might make it a little easier—The Clevis Pin Wedgie Tool! Here is how we use it.

1. Push the Wedgie Tool into the clevis pin clip to spread the spring arms.
2. Push the clevis pin in from the driver's side of the brake booster yoke using needle nose pliers. Wedge a flat blade screwdriver between the pin and the side of the brake booster mounting bracket as shown.
3. Slide the clip (with the Wedgie Tool inserted) over the end of the clevis pin and into the pin's groove. The clip must be flat against the brake booster yoke and pushed straight down to engage properly.
4. Once the clip is completely in the pin's groove, simply push the Wedgie Tool down and out of the clip. Done!



“DON'T GET YOUR PANTIES IN A BUNCH, JUST USE OUR WEDGIE!”